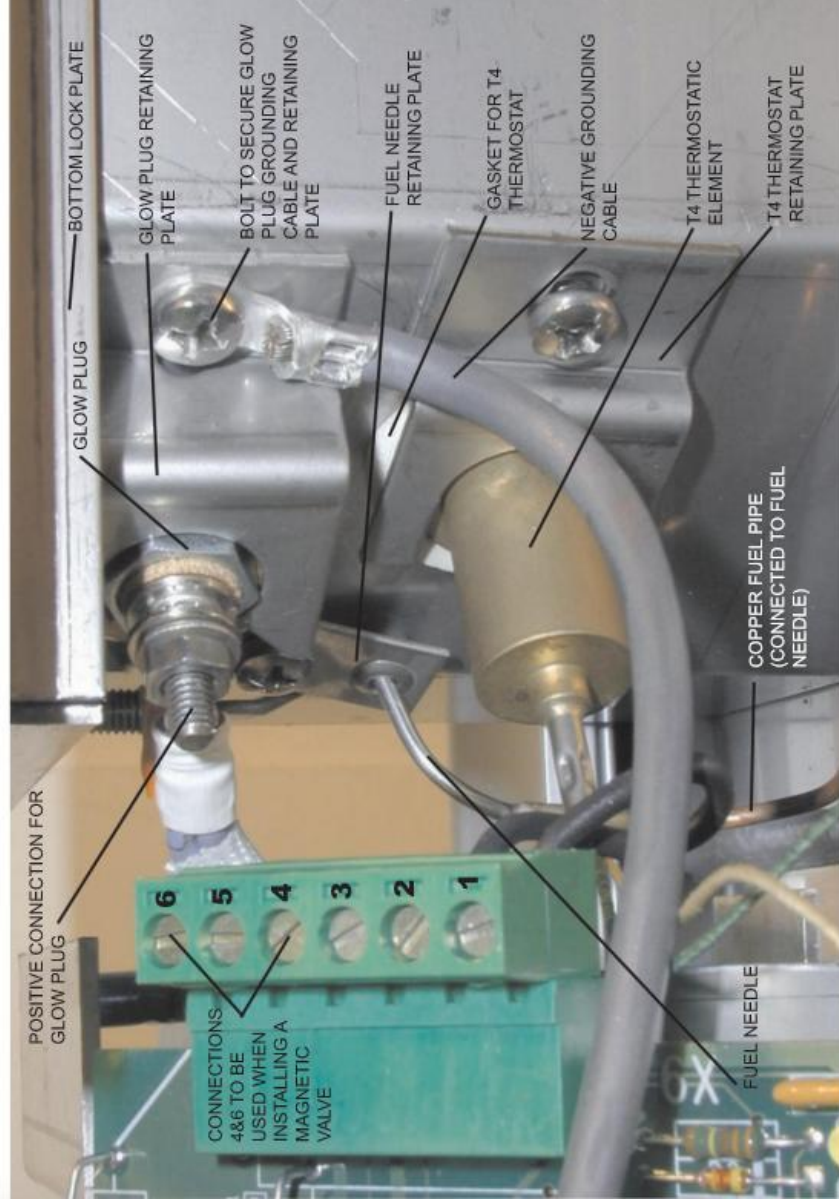
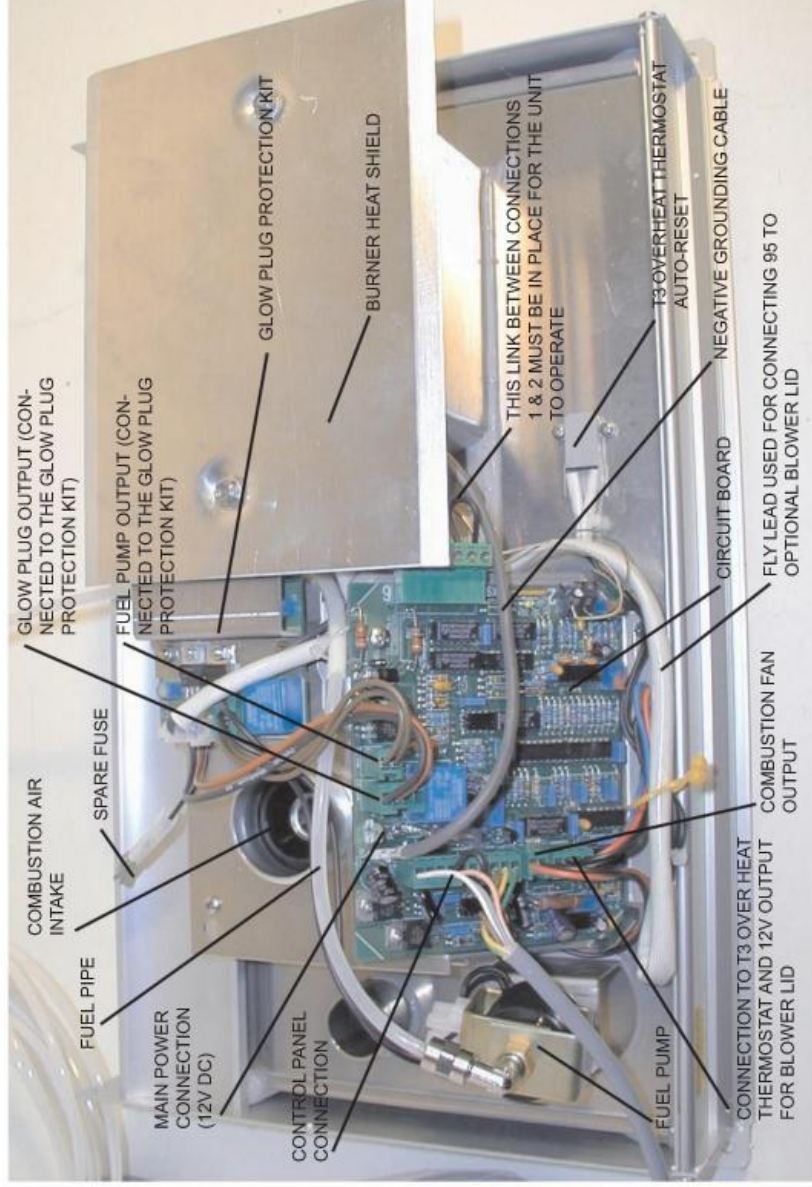
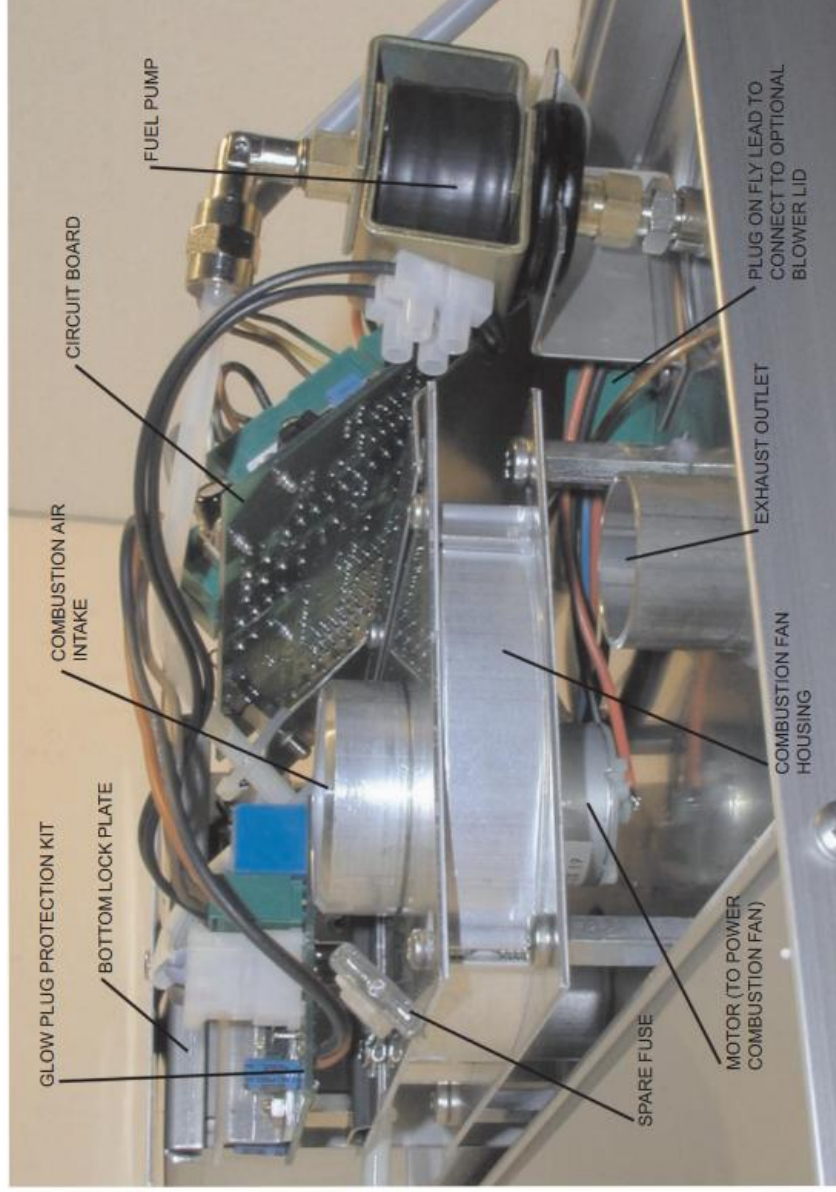


# wallas<sup>®</sup>



**Kuranda**  
**Kuranda House, Forge Road**  
**Whaley Bridge, High Peak. SK23 9RY**  
**Tel: 01663 734800 Fax: 01663 733343**  
**[www.kuranda.co.uk](http://www.kuranda.co.uk) [info@kuranda.co.uk](mailto:info@kuranda.co.uk)**





Remove the control panel connection plug. (grip all coloured cables firmly so as not to pull on single cables.)



Remove the burner heat shield retaining nuts.



Remove the burner heat shield and then the bottom lock plate.



Remove the burner pot retaining spring plate.



Remove the plugs as follows, the glow plug output connection plug, the combustion fan output plug, the negative grounding cable, the fuel pump output plug, the T3 over heat stat and blower lid output plug and if the magnetic valve is fitted the plug this has been connected to.



Remove the circuit board retaining screw.





(View of the partially extracted fuel needle.)



Remove the burner by tilting it as shown.



Lift and remove heat shield from burner.



Using a flat blade screw driver compress the retaining spring to release the flame spreader.



Using a flat blade screw driver compress the retaining spring to release the flame spreader.



Remove the flame spreader.



Remove the quartz bottom carpet retaining spring.



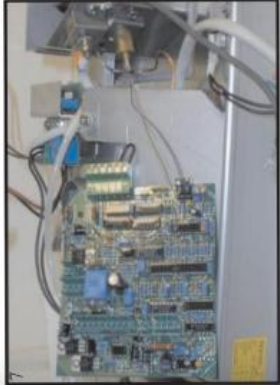
Remove the quartz bottom carpet. Clean the carbon deposits from the burner. If the carbon can be removed from the quartz carpet with out damaging it then reinstall, if not then replace it with new.

### **Reassembling of the Wallas 95D ceramic hob.**

Once the fuel needle has been checked and replaced if necessary, the burner cleaned and the quartz carpet cleaned or replaced, then the service is complete and the unit is now ready for reassembling. To do this follow the instructions 1-26 in reverse order, being very careful to replace all components, wires etc. in the correct place. Failure to do this could damage the unit. *If any part of these instructions are not clear or you do not understand them, then please do not hesitate to contact your Wallas distributor.*

### **NOTES**

- Do not attempt to clean the fuel needle. Always replace if there is any sign of carbon residue inside it.
- Whilst reinstalling the flame spreader back in to the burner, make sure the two spring retaining clips have returned to there original position, holding it securely in place See fig 22+23.
- If there are any signs of deterioration on the surface of the glow plug then replace it whilst reassembling the unit, see fig 14
- Check all the gaskets for any damage or deterioration that may effect the operation of the unit if any are suspect change them.
- When tightening the nuts that hold the burner heat shield and the bottom lock plate to the burner chamber box, check that there is no play between them and there is no gaps between the bottom lock plate and the burner chamber box.
- Once the unit has been reassembled, double check every cable nut screw and component is in the correct position before refitting.
- CAUTION; When reinstalling the unit check all fuel pipe connections are tight, an air leak into the pipe will cause starting or combustion problems.



7 Move the circuit board to one side to allow access to the thermostat, glow plug etc.



8 Remove the screw holding the T4 thermostat retaining plate.



9 Remove the T4 thermostat and retaining plate.



10 Remove the gasket which seals the T4 thermostat.



11 Disconnect the glow plug connection cable.



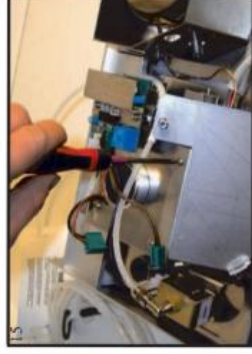
12 Remove the screw which holds the negative grounding cable and glow plug retaining plate.



13 Remove the glow plug retaining plate and negative grounding wire.



14 Remove the glow plug.



15 Remove all three PCB retaining plate screws.



16 Remove PCB retaining plate

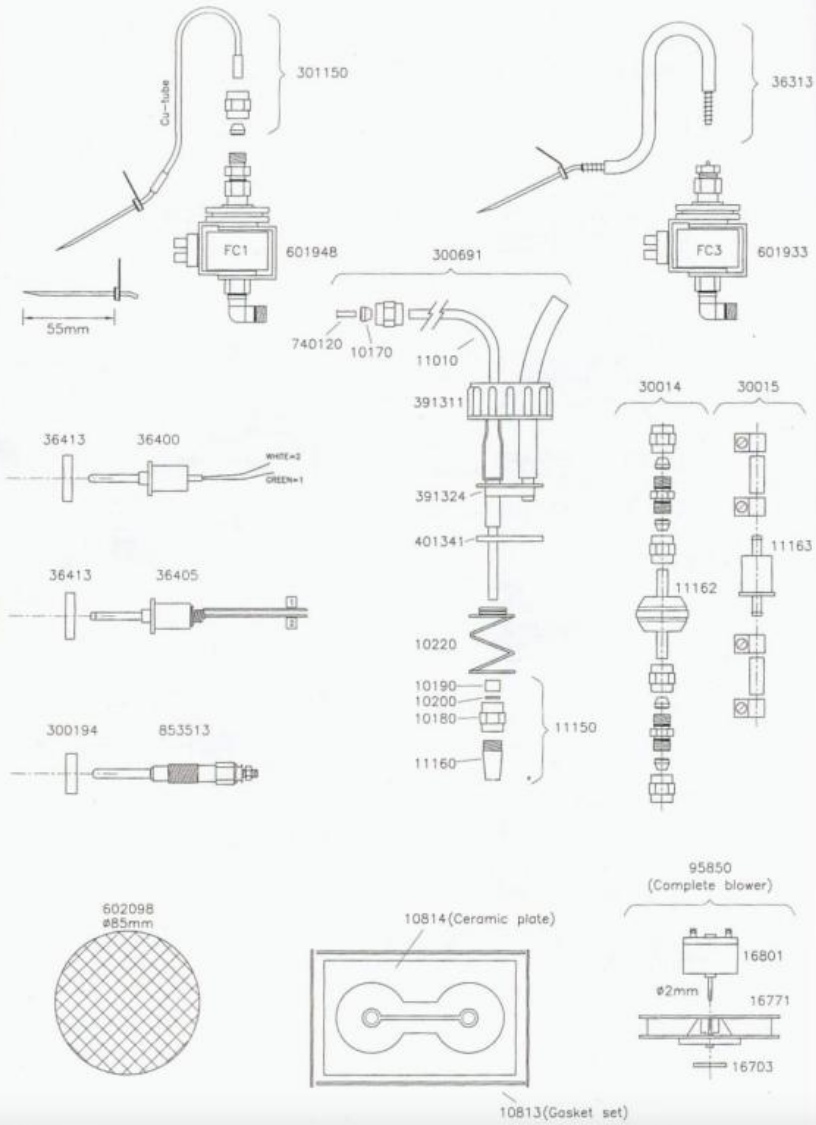


17 Remove the screw which holds the fuel needle retaining plate.



18 Extract the fuel needle far enough to be able to remove the burner assembly. (If the fuel needle is partially or fully blocked with carbon then remove and replace.)

95D STOVE



95D STOVE

