

Gulper[®] 220

Gulper valve technology handles shower waste such as hair and gel

No clog, no filter waste pump built on more than a decade of market leading pump technology

Robust housing reliable, marine grade materials



Absorbs vibration rubber feet

Easy maintenance non choke valves, no filter to block or clean

Double outlet valve for continuous flow

Straight forward installation multi directional head rotates 360° for convenient installation

Simple plumbing - barbed connections Suitable for 3/4" (19mm) or 1" (25mm) flexible hose

Product code: see table

Also available Gulper 320 High Capacity Model for multiple drains See page 100



Features and Benefits

- Gulper 220 - pumps shower waste including hair and gels
- Up to 14 ltrs (3.7 US gals) per minute*
- Will run dry without damage and pump a mixture of air and water
- Virtually non-choke valves - No filter to unblock
- Reliable operation - Self-priming up to 3 m (10 ft)
- Easy to install in confined spaces
- Double outlet valve ensuring continuous flow
- Multi directional head - for ease of installation
- Low power consumption

2 Year Warranty

Awards and Accreditations

- ISO10133 Electrical systems – extra low voltage dc installations
- Ignition protected ISO8846.
- CE marked
- IP45 rated

COMPLETE YOUR SYSTEM

See Page 110-111 for Grey waste accessories

YOU MAY ALSO LIKE

Grey IC and Gulley IC – Automatic Grey waste pump kits with automatic intelligent control built in – see pages 96-99
 Gulper 320 - High Capacity Electric Grey Waste pump – page 100

Product Information

Model Specifications

Model	Gulper® 220	
Product Code	BP1552	BP1554
Voltage	12 V d.c.	24 V d.c.
Recommended Fuse Size	5 amp Automotive	2.5 amp Automotive
Weight	1.5 kg (3.4 lbs)	
Hose Connections	19 mm (¾")	
Minimum Wire Size	1.5 mm² (16 AWG)	
Materials	Pump Body: Aluminium, Glass-filled Nylon, Clamp Ring: Acetal Diaphragm: Santoprene®, Valves: Nitrile®, Feet: EPDM Gearwheel: Delrin®, Fasteners: Stainless Steel, Brass	
Materials in Contact With Fluid	Glass-filled Nylon, Nitrile®, Santoprene®, Stainless Steel	
Accessories	Grey Waste Tanks (see page 98)	
Service Kit	AK1550 - Gulper® 220 Service Kit Contains: Diaphragm and Valves	
Maximum Suction Lift	3 m (10 ft)	
Maximum Discharge Head	3 m (10 ft)	
Maximum Discharge Head and Suction Lift (combined)	4 m (13.5 ft)	
Dry Running Current	2.4 amps	1.2 amps

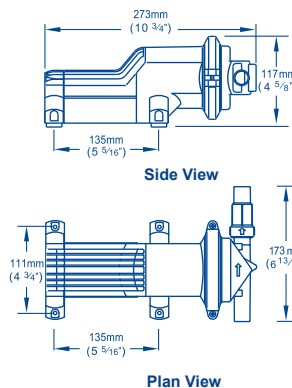
Performance Data

	BP1552 / BP1554	BP1552 / BP1554
Suction Lift	0 m (0 ft)	1 m (3 ft)
Discharge Head	1 m (3 ft)	1 m (3 ft)
Flow Rate per Minute	13.4 ltrs (3.5 US gals)	12.6 ltrs (3.4 US gals)
Current Draw	3.5 amps (12 V d.c.) 1.75 amps (24 V d.c.)	4 amps (12 V d.c.) 2 amps (24 V d.c.)

* based on Whale lab tests at zero head lift and zero head

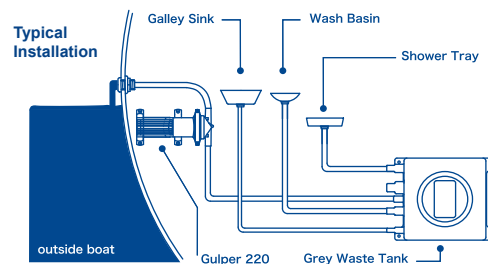
Note: These specifications are retail items only.

For details of our bulk pack range for boat builders and wholesalers - contact Whale Support.



WARNING
 Gulper® 220 is not suitable for pumping diesel. For this application please contact Whale for information.

Now with barbed outlet (discharge) connections to allow a choice of connecting directly to either ¾" (19 mm) or 1" (25 mm)





Electric Waste Pumps

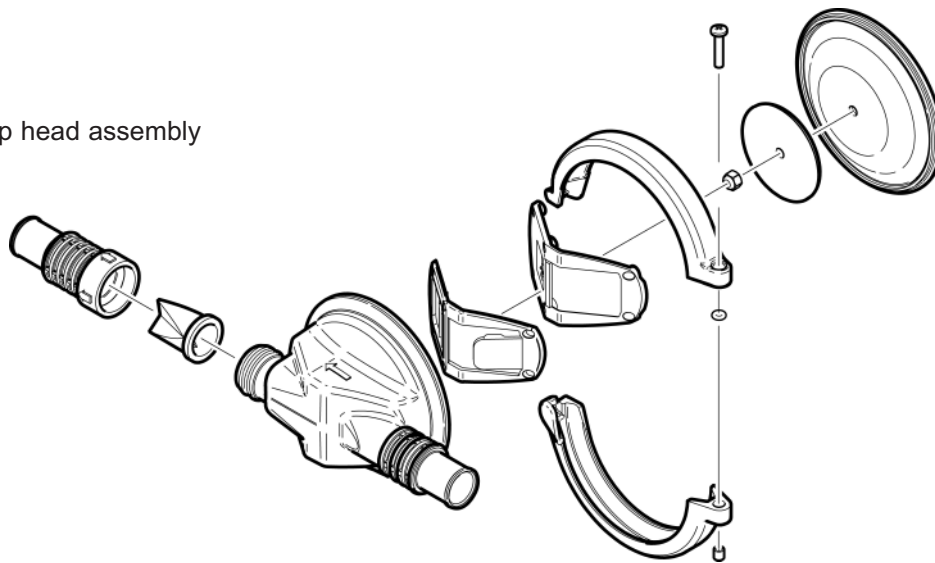
Gulper® 220 Shower Drain/Grey Waste Pump

BP1552 (12V d.c.), BP1554 (24V d.c.)

Shower Drain Waste Pump



AK2050 Pump head assembly



Note: Pump head ONLY available as spare

Accessories

GW0810 8 Ltr (2.2 US Gals) Grey Waste Tank

GW1610 16 Ltr (4.4 US Gals) Grey Waste Tank

Service Kits

AK2050 Replacement Pump Head for Gulper 320 and Gulper 220

Qty	Containing
1	Diaphragm
1	Nyloc Nut M5
1	Screw Hex M5 x 16mm
1	Outlet Valve Tricuspid
1	Marine Head 3/4" and 1"
1	Valve Inlet and Outlet
1	Valve Plate
1	Outlet Valve Housing

AS1562 Clamping Ring Kit



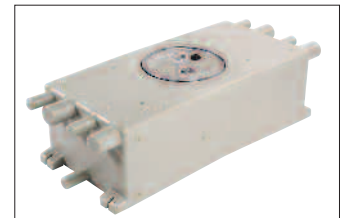
AK2050



AS1562



GW0810



GW1610